



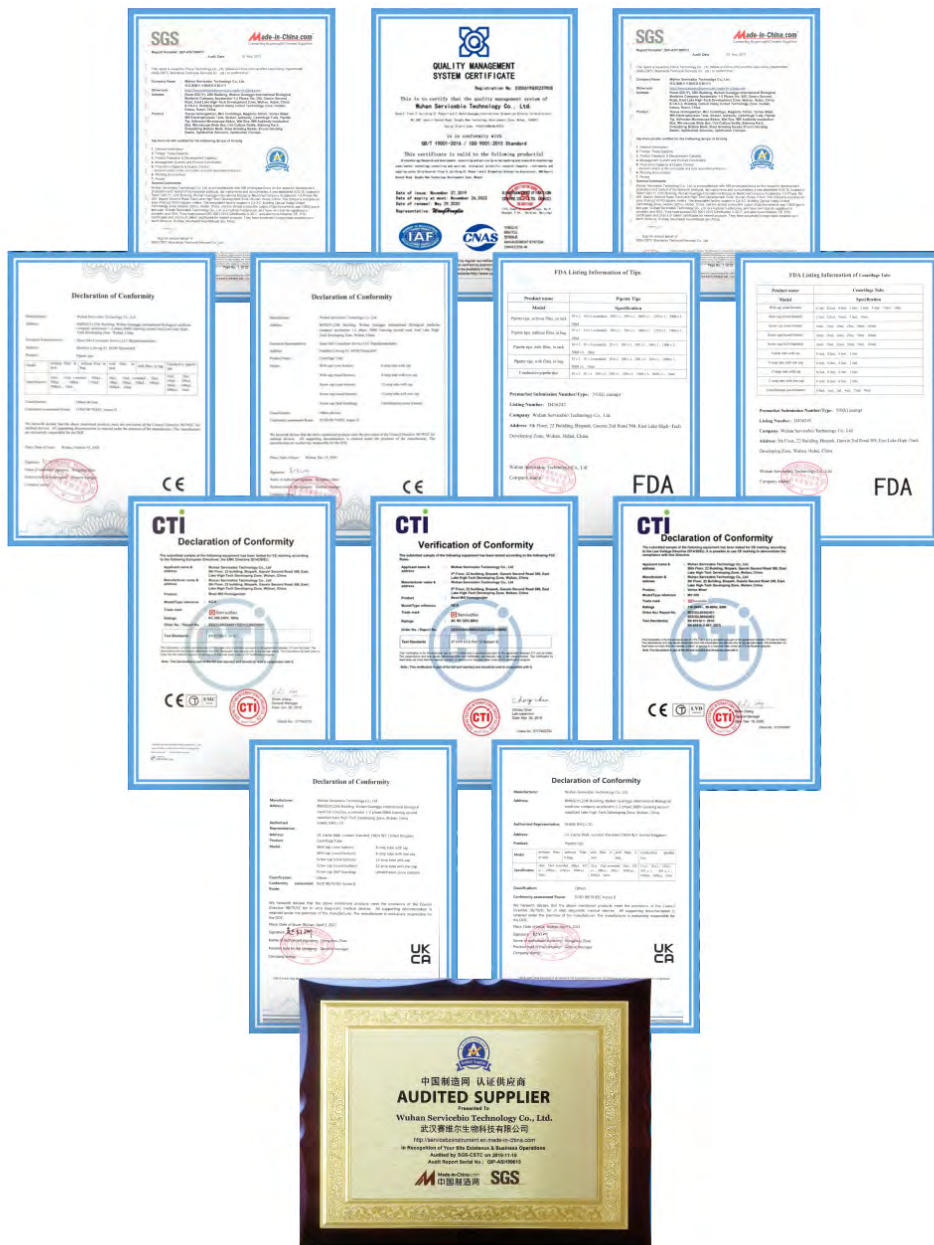
# PRODUCT CATALOGUE

Wuhan Servicebio Technology Co., Ltd.

# Company Profile

Wuhan Servicebio Technology Co., Ltd. was established in 2007. As of today, there are more than 1500 employees. The headquarter of Servicebio is located in Wuhan, and there are two factories, owning 200 injection molding machines, for the production of lab consumables including pipette tips & centrifuge tubes & PCR plates & reagent bottles etc. Servicebio has established 40 branch offices and 16 lab centers across China. All the products are strictly tested in our own labs before entering the market. We adhere to the management principles of "quality first, customer first and credit-based" since the establishment of the company and always do our best to satisfy potential needs of our customers. Till now, we have exported our products to more than 70 countries all over the world. Servicebio is willing to cooperate with enterprises across the world to realize win-win situation.

## CERTIFICATES



# Consumables

## Pipette Tips

### Non-filter Tips



| Description(packaging/bag)  | Item number | Size                  | Carton content |                     | Carton size |
|---|-------------|-----------------------|----------------|---------------------|-------------|
| 10µL Long Pipette Tips<br>(RNase &DNase Free, Sterilized by Radiation)                              | TP-10P      | 10µL Long             | 1000pcs/bag    | 10bags/carton       | 45*28*18cm  |
| 200µL Pipette Tips<br>(RNase &DNase Free, Sterilized by Radiation)                                  | TP-200      | 200µL                 | 1000pcs/bag    | 20bags/carton       | 70*24*34cm  |
| 1000µL Pipette Tips<br>(RNase &DNase Free, Sterilized by Radiation)                                 | TP-1000     | 1000µL                | 500pcs/bag     | 10bags/carton       | 70*24*34cm  |
| 1000µL Long Pipette Tips<br>(RNase &DNase Free, Sterilized by Radiation)                            | TP-1250     | 1000µL Long           | 500pcs/bag     | 10bags/carton       | 70*24*34cm  |
| 5mL Narrow Caliber Pipette Tips<br>(RNase &DNase Free, Sterilized by Radiation)                     | TP-5000S    | 5mL<br>Narrow Caliber | 100pcs/bag     | 20bags/carton       | 70*24*34cm  |
| 5mL Wide Caliber Pipette Tips<br>(RNase &DNase Free, Sterilized by Radiation)                       | TP-5000L    | 5mL<br>Wide Caliber   | 100pcs/bag     | 20bags/carton       | 70*24*34cm  |
| 5mL Narrow Caliber Pipette Tips<br>(RNase &DNase Free, Sterilized by Radiation. Individual Packing) | TP-5001S    | 5mL<br>Narrow Caliber | 1000pcs/carton |                     | 70*24*34cm  |
| 5mL Wide Caliber Pipette Tips<br>(RNase &DNase Free, Sterilized by Radiation. Individual Packing)   | TP-5001L    | 5mL<br>Wide Caliber   | 1000pcs/carton |                     | 70*24*34cm  |
| 10mL Pipette Tips<br>(RNase&DNase Free, Sterilized by Radiation)                                    | TP-10000    | 10mL                  | 100pcs/bag     | 10bags/carton       | 70*24*34cm  |
| Description(packaging/rack)   | Item number | Size                  | Carton content |                     | Carton size |
| 10µL Long Pipette Tips<br>(RNase &DNase Free, Sterilized by Radiation)                              | TP-10P-C    | 10µL Long             | 96pcs/rack     | 100racks/<br>carton | 71*51*29cm  |
| 200µL Pipette Tips<br>(RNase &DNase Free, Sterilized by Radiation)                                  | TP-200-C    | 200µL                 | 96pcs/rack     | 100racks/<br>carton | 71*51*29cm  |
| 1000µL Pipette Tips<br>(RNase &DNase Free, Sterilized by Radiation)                                 | TP-1000S-C  | 1000µL                | 96pcs/rack     | 50racks/carton      | 71*51*26cm  |
| 1000µL Long Pipette Tips<br>(RNase &DNase Free, Sterilized by Radiation)                            | TP-1000-C   | 1000µL Long           | 96pcs/rack     | 50racks/carton      | 71*51*26cm  |
| 10mL Pipette Tips<br>(RNase&DNase Free, Sterilized by Radiation)                                    | TP-10000-C  | 10mL                  | 24pcs/rack     | 50racks/carton      |             |

### Filter Tips



| Description(packaging/bag)   | Item number | Size        | Carton content |                   | Carton size |
|--|-------------|-------------|----------------|-------------------|-------------|
| 10µL Long Filter Tips<br>(RNase &DNase Free, Sterilized by Radiation)            | TP-10P-F    | 10µL Long   | 1000pcs/bag    | 10bags/<br>carton | 45*28*18cm  |
| 20µL Filter Tips<br>(RNase &DNase Free, Sterilized by Radiation)                 | TP-20-F     | 20µL        | 1000pcs/bag    | 20bags/<br>carton | 70*24*34cm  |
| 100µL Filter Tips<br>(RNase &DNase Free, Sterilized by Radiation)                | TP-100-F    | 100µL       | 1000pcs/bag    | 20bags/<br>carton | 70*24*34cm  |
| 200µL Filter Tips<br>(RNase &DNase Free, Sterilized by Radiation)                | TP-200-F    | 200µL       | 1000pcs/bag    | 20bags/carton     | 70*24*34cm  |
| 1000µL Filter Tips<br>(RNase &DNase Free, Sterilized by Radiation)               | TP-1000S-F  | 1000µL      | 500pcs/bag     | 10bags/carton     | 70*24*34cm  |
| 1000µL Long Filter Tips<br>(RNase &DNase Free, Sterilized by Radiation)          | TP-1000-F   | 1000µL Long | 500pcs/bag     | 10bags/carton     | 70*24*34cm  |
| 10mL Filter Tips (RNase&DNase Free, Sterilized by Radiation, Individual Packing) | TP-10001-F  | 10mL        | 50pcs/bag      | 10bags/carton     |             |



# Consumables

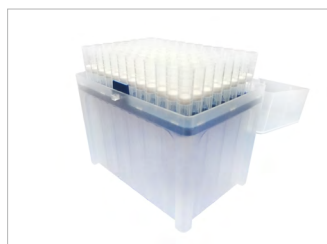
| Description(packaging/bag)   | Item number  | Size                  | Carton content |                     | Carton size |
|--|--------------|-----------------------|----------------|---------------------|-------------|
| 5mL Narrow Caliber Filter Tips<br>(RNase & DNase Free, Sterilized by Radiation, in bulk)           | TP-5000S-F   | 5mL<br>Narrow Caliber | 100pcs/bag     | 20bags/carton       | 70*24*34cm  |
| 5mL Wide Caliber Filter Tips<br>(RNase & DNase Free, Sterilized by Radiation, in bulk)             | TP-5000L-F   | 5mL<br>Wide Caliber   | 100pcs/bag     | 20bags/carton       | 70*24*34cm  |
| 5mL Narrow Caliber Filter Tips<br>(RNase & DNase Free, Sterilized by Radiation Individual Packing) | TP-5001S-F   | 5mL<br>Narrow Caliber | 100pcs/bag     | 10bags/carton       | 70*24*34cm  |
| 5mL Wide Caliber Filter Tips<br>(RNase & DNase Free, Sterilized by Radiation Individual Packing)   | TP-5001L-F   | 5mL<br>Wide Caliber   | 100pcs/bag     | 10bags/carton       | 70*24*34cm  |
| 10mL Filter Tips<br>(RNase & DNase Free, Sterilized by Radiation)                                  | TP-10000-C-F | 10mL                  | 24pcs/rack     | 50racks/carton      |             |
| Description(packaging/rack)  | Item number  | Size                  | Carton content |                     | Carton size |
| 10µL Long Filter Tips<br>(RNase & DNase Free, Sterilized by Radiation)                             | TP-10P-C-F   | 10µL Long             | 96pcs/rack     | 100racks/<br>carton | 71*51*29cm  |
| 20µL Filter Tips<br>(RNase & DNase Free, Sterilized by Radiation)                                  | TP-20-C-F    | 20µL                  | 96pcs/rack     | 100racks/<br>carton | 71*51*29cm  |
| 100µL Filter Tips<br>(RNase & DNase Free, Sterilized by Radiation)                                 | TP-100-C-F   | 100µL                 | 96pcs/rack     | 100racks/<br>carton | 71*51*29cm  |
| 200µL Filter Tips<br>(RNase & DNase Free, Sterilized by Radiation)                                 | TP-200-C-F   | 200µL                 | 96pcs/rack     | 100racks/<br>carton | 71*51*29cm  |
| 1000µL Filter Tips<br>(RNase & DNase Free, Sterilized by Radiation)                                | TP-1000S-C-F | 1000µL                | 96pcs/rack     | 50racks/carton      | 71*51*26cm  |
| 1000µL Long Filter Tips<br>(RNase & DNase Free, Sterilized by Radiation)                           | TP-1000-C-F  | 1000µL Long           | 96pcs/rack     | 50racks/carton      | 71*51*26cm  |

## Low-retention Filter Tips

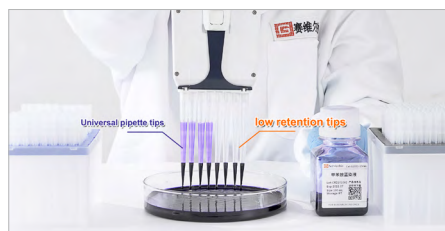
| Description(packaging/rack)  | Item number   | Size        | Carton content |                 | Carton size |
|--|---------------|-------------|----------------|-----------------|-------------|
| 10µL Long Low-retention Filter Tips<br>(RNase & DNase Free, Sterilized by Radiation)   | TP-10PL-C-F   | 10µL Long   | 96pcs/rack     | 100racks/carton | 71*51*29cm  |
| 20µL Low-retention Filter Tips<br>(RNase & DNase Free, Sterilized by Radiation)        | TP-20L-C-F    | 20µL        | 96pcs/rack     | 100racks/carton | 71*51*29cm  |
| 100µL Low-retention Filter Tips<br>(RNase & DNase Free, Sterilized by Radiation)       | TP-100L-C-F   | 100µL       | 96pcs/rack     | 100racks/carton | 71*51*29cm  |
| 200µL Low-retention Filter Tips<br>(RNase & DNase Free, Sterilized by Radiation)       | TP-200L-C-F   | 200µL       | 96pcs/rack     | 100racks/carton | 71*51*29cm  |
| 1000µL Low-retention Filter Tips<br>(RNase & DNase Free, Sterilized by Radiation)      | TP-1000SL-C-F | 1000µL      | 96pcs/rack     | 50 racks/carton | 71*51*26cm  |
| 1000µL Long Low-retention Filter Tips<br>(RNase & DNase Free, Sterilized by Radiation) | TP-1000L-C-F  | 1000µL Long | 96pcs/rack     | 50racks/carton  | 71*51*26cm  |

## Package

### Filter Tips



### Low-retention Filter Tips



# Consumables

## Robotic Tips



| Description(packing/rack)  | Item number  | Size   | Carton content |                     | Carton size  |
|--|--------------|--------|----------------|---------------------|--------------|
| 250µL Robotic Filter Pipette Tips<br>(RNase &DNase Free, Sterilized by Radiation)  | MTP-250-C-F  | 250µL  | 96pcs/rack     | 100racks/<br>carton | 70*49.5*29cm |
| 1000µL Robotic Filter Pipette Tips<br>(RNase &DNase Free, Sterilized by Radiation) | MTP-1000-C-F | 1000µL | 96pcs/rack     | 50racks/<br>carton  | 71*51*26cm   |

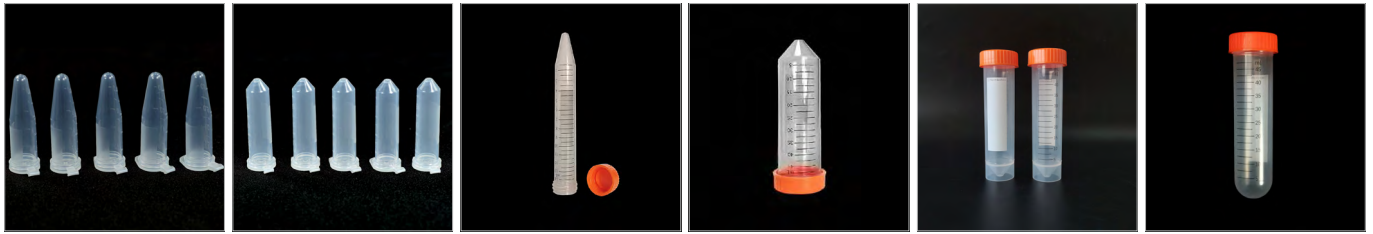
## Conductive Tips



| Description(packing/rack)   | Size          | Size   | Carton content |                     | Carton size  |
|---|---------------|--------|----------------|---------------------|--------------|
| 250µL Conductive Filter Pipette Tips<br>(RNase &DNase Free, Sterilized by Radiation)  | METP-250-C-F  | 250µL  | 96pcs/rack     | 100racks/<br>carton | 70*49.5*29cm |
| 1000µL Conductive Filter Pipette Tips<br>(RNase &DNase Free, Sterilized by Radiation) | METP-1000-C-F | 1000µL | 96pcs/rack     | 50racks/<br>carton  | 71*51*26cm   |

# Consumables

## Centrifuge Tubes



## Package



| Description  | Item number | Size  | Carton content |                | Carton size |
|--|-------------|-------|----------------|----------------|-------------|
| 1.5mL Sterile Centrifuge Tube (RNase & DNase Free), Packed in Bag                | EP-150-J    | 1.5mL | 500pcs/bag     | 10bags/carton  | 70*24*34cm  |
| 2mL Sterile Centrifuge Tube (RNase & DNase Free), Packed in Bag                  | EP-200-J    | 2mL   | 500pcs/bag     | 10bags/carton  | 70*24*34cm  |
| 15mL Sterile Centrifuge Tube (RNase & DNase Free), Packed in Rack                | EP-1500-J   | 15mL  | 50pcs/rack     | 10racks/carton | 69*28*24cm  |
| 15mL Sterile Centrifuge Tube (RNase & DNase Free), Packed in Bag                 | EP-1500-BJ  | 15mL  | 50pcs/bag      | 10bags/carton  | 36*27*29cm  |
| 50mL Sterile Centrifuge Tube (RNase & DNase Free), Packed in Rack                | EP-5000-J   | 50mL  | 25pcs/rack     | 20racks/carton | 64*43*48cm  |
| 50mL Sterile Centrifuge Tube (RNase & DNase Free), Packed in Bag                 | EP-5000-BJ  | 50mL  | 25pcs/bag      | 20bags/carton  | 64*43*38cm  |
| 15mL Sterile Centrifuge Tube (RNase & DNase Free), Individual Packing            | EP-1501-J   | 15mL  | 50pcs/bag      | 10bags/carton  | 66*45*19cm  |
| 50mL Sterile Centrifuge Tube (RNase & DNase Free), Individual Packing            | EP-5001-J   | 50mL  | 25pcs/bag      | 20bags/carton  | 71*45*43cm  |
| 50mL U-bottom Centrifuge Tube (Sterile, RNase&DNase Free, Packed in Bag)         | EP-5010-BJ  | 50mL  | 25pcs/bag      | 20bags/carton  |             |
| 50mL V-bottom Skirted Centrifuge Tube (Sterile, RNase&DNase Free, Packed in Bag) | EP-5020-BJ  | 50mL  | 25pcs/bag      | 20bags/carton  |             |
| 50mL U-bottom Skirted Centrifuge Tube (Sterile, RNase&DNase Free, Packed in Bag) | EP-5030-BJ  | 50mL  | 25pcs/bag      | 20bags/carton  |             |

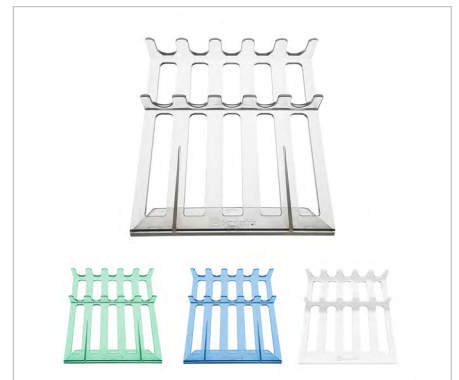
## Centrifuge Tube Rack & Pipettor Stand



15mL Tube Rack



50mL Tube Rack



5-position Pipettor Stand

# Consumables

| Description(packing/carton)       | Item number | Size       |
|-----------------------------------|-------------|------------|
| 18-well 15mL Centrifuge Tube Rack | TR-1500     | 15mL       |
| 8-well 50mL Centrifuge Tube Rack  | TR-5000     | 50mL       |
| 5-position Pipettor Stand         | PR-5        | 5-position |

## Virus Preservation Tube



| Description(packing/carton)                   | Item number | Size | Carton content            | Carton size   |
|---|-------------|------|---------------------------|---------------|
| 10mL, Sterilized by Radiation, Packed in Bag  | VT-1000-B-J | 10mL | 50pcs/bag 10bags/carton   | 35*27*29cm    |
| 10mL, Sterilized by Radiation, Packed in Rack | VT-1000-C-J | 10mL | 50pcs/rack 10racks/carton | 69*27*29cm    |
| 30mL, Sterilized by Radiation, Packed in Bag  | EP-3020     | 30mL | 500pcs/carton             | 410*410*385cm |

## Reagent Bottle(PET)



| Description(packing/carton)  | Item number  | Size   | Carton content | Carton size |
|--|--------------|--------|----------------|-------------|
| 125mL Reagent Bottle(PET), Transparent(Sterile, RNase & DNase Free)  | PET-125-T-J  | 125mL  | 147pcs/carton  | 41*41*39cm  |
| 250mL Reagent Bottle (PET), Transparent (Sterile, DNase&RNase Free)  | PET-250-T-J  | 250mL  | 100pcs/carton  | 62*31*32cm  |
| 500mL Reagent Bottle(PET), Transparent(Sterile, RNase & DNase Free)  | PET-500-T-J  | 500mL  | 50pcs/carton   | 41*41*39cm  |
| 500mL Reagent Bottle(PET), Light-proof(Sterile, RNase & DNase Free)  | PET-500-B    | 500mL  | 50pcs/carton   | 41*41*39cm  |
| 1000mL Reagent Bottle(PET), Transparent(Sterile, RNase & DNase Free) | PET-1000-T-J | 1000mL | 50pcs /carton  | 48*49*46cm  |

# Consumables

## Specimen Bottle



| Description(packing/carton)                                  | Item number | Size | Carton content | Carton size |
|--|-------------|------|----------------|-------------|
| 40mL Specimen Bottle(PP),<br>Transparent(RNase & DNase Free) | G6008-40ML  | 40mL | 500pcs/carton  | 41*41*39cm  |



# Consumables

## 96 Deep-well Plate



2.2mL U-Bottom



2.2mL V-Bottom



1.6mL U-Bottom



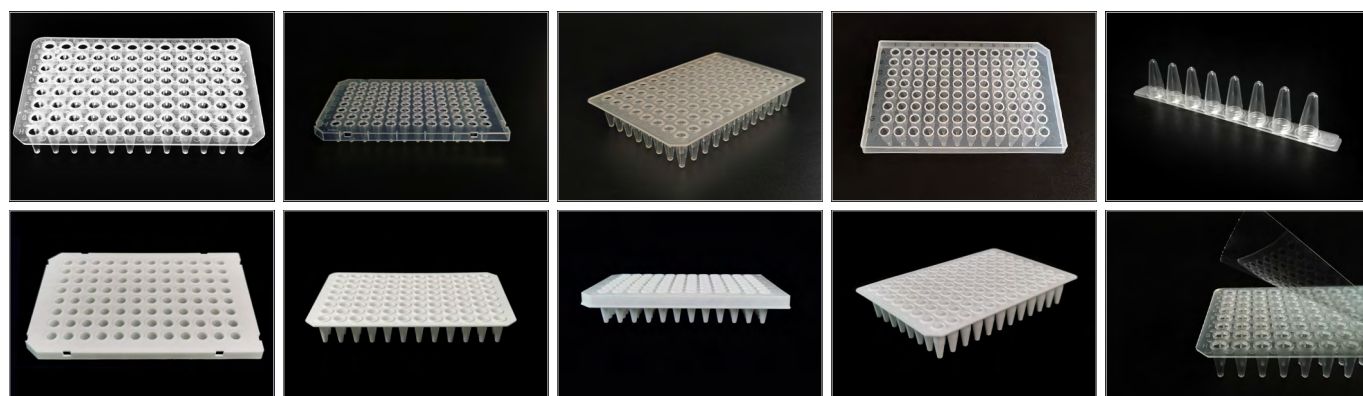
2mL U-Bottom



2mL V-Bottom

| Description(packing/box)                                     | Item number | Size  | Carton content |               | Carton size |
|--|-------------|-------|----------------|---------------|-------------|
| Sterile 96 Deep-well Plate, U-bottom (RNase &DNase Free)     | KB-96U20-L  | 2.2mL | 16pcs/box      | 4boxes/carton | 42*38*39cm  |
| Sterile 96 Deep-well Plate, V-bottom (RNase &DNase Free)     | KB-96V20-L  | 2.2mL | 16pcs/box      | 4boxes/carton | 42*38*39cm  |
| Sterile 96 Magnetic Tip Comb, U-bottom (RNase &DNase Free)   | CT-96U-L    | 2mL   | 32pcs/box      | 4boxes/carton | 42*38*39cm  |
| Sterile 96 Magnetic Tip Comb, V-bottom (RNase &DNase Free)   | CT-96V-L    | 2mL   | 32pcs/box      | 4boxes/carton | 42*38*39cm  |
| Sterile 96-well Deep Well Plate, U-bottom (DNase&RNase Free) | KB-96U16-L  | 1.6mL | 20pcs/box      | 4boxes/carton | 42*38*39cm  |

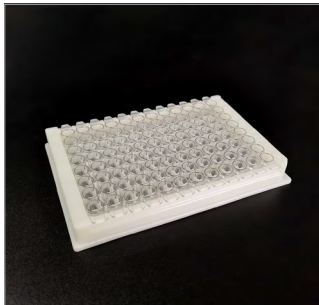
## PCR Plate & PCR Plate Sealing Film



| Description   | Item number  | Size  | Carton content |                | Carton size |
|---|--------------|-------|----------------|----------------|-------------|
| 0.1mL PCR Plate, Non-skirt (RNase &DNase Free)        | PCR-9601-NS  | 0.1mL | 10pcs/box      | 10boxes/carton | 47*23*16cm  |
| 0.1mL PCR Plate, Half-skirt (DNase&RNase Free)        | PCR-9601-HS  | 0.1mL | 10pcs/box      | 10boxes/carton | 42*20*16cm  |
| 0.1mL PCR Plate, Half-skirt, White (DNase&RNase Free) | PCR-9601W-HS | 0.1mL | 10pcs/box      | 10boxes/carton |             |
| 0.1mL PCR Plate, Non-skirt, White (DNase&RNase Free)  | PCR-9601W-NS | 0.1mL | 10pcs/box      | 10boxes/carton | 42*20*16cm  |
| 0.2mL PCR Plate, Non-skirt (RNase &DNase Free)        | PCR-9602-NS  | 0.2mL | 10pcs/box      | 10boxes/carton | 49*30*17cm  |
| 0.2mL PCR Plate, Half-skirt (RNase &DNase Free)       | PCR-9602-HS  | 0.2mL | 10pcs/box      | 20boxes/carton | 48*30*30cm  |
| 0.2mL PCR Plate, Half-skirt, White (DNase&RNase Free) | PCR-9602W-HS | 0.2mL | 10pcs/box      | 10boxes/carton | 48*30*19cm  |
| 0.2mL PCR Plate, Non-skirt, White (DNase&RNase Free)  | PCR-9602W-NS | 0.2mL | 10pcs/box      | 10boxes/carton | 49*31*17cm  |
| PCR Plate Sealing Film, Pressure Sensitive            | G6065        | /     | 100pcs/box     | /              | 15*9*2cm    |
| PCR 8-strip Tube, with Flat Caps (DNase&RNase Free)   | PCR-0801-FC  | 0.1mL | 125pcs/box     | 10boxes/carton | 48*31*16cm  |
| PCR 8-strip Tube, with Flat Caps (DNase&RNase Free)   | PCR-0802-FC  | 0.2mL | 125pcs/box     | 10boxes/carton | 48*31*16cm  |

# Consumables

## Elisa Plate



| Description(packing/box)  | Item number | Size | Carton content |                | Carton size |
|---|-------------|------|----------------|----------------|-------------|
| 96-well Elisa Plate, 8-Strip Detachable. Flat Bottom (RNase&DNase Free), Protein High-retention | ESP-96-D    | 96T  | 10pcs/box      | 20boxes/carton | 47*30*34cm  |

## Cell Culture Plate



| Description(packing/bag)                        | Item number | Size    | Carton content |               | Carton size |
|---|-------------|---------|----------------|---------------|-------------|
| Petri Dish(TC Treated, Sterile)                 | CCD-100     | 100mm   | 20pcs/bag      | 25bags/carton | 51*51*46cm  |
| 6-well Cell Culture Plate(TC Treated, Sterile)  | CCP-6H      | 6-well  | 1pc/bag        | 50pcs/carton  | 54*31*20cm  |
| 96-well Cell Culture Plate(TC Treated, Sterile) | CCP-96H     | 96-well | 1pc/bag        | 100pcs/carton | 54*23*36cm  |
| Bacteriological Petri Dish (Sterile)            | BPD-90      | 90mm    | 20pcs/bag      | 25bags/carton | 51*51*46cm  |

# Consumables

## Other Consumables



WB Antibody Incubation Box  
(Transparent, 2 Grids)  
G6025-2



WB Antibody Incubation Box  
(Transparent, 4 Grids)  
G6026-4



WB Antibody Incubation Box  
(Transparent, 9 Grids)  
G6019-9



WB Antibody Incubation Box  
(Lightproof, 9 Grids)  
G6020-9



Wet Box  
(Lightproof, 10 Grids)  
WG525



Wet Box  
(Lightproof, 20 Grids)  
WG524



Wet Box  
(Transparent, 20 Grids)  
WG526



81 Cryogenic Storage Box  
G9004-81



2mL Cryogenic Vial  
CV-2-ET



1mL, 2mL, 5mL, 10mL, 25mL,  
50mL Serological Pipettes  
SP-1-F/ SP-2-F/SP-5-F/SP-10-F/SP-25-F/SP-50-F



1mm, 2mm, 3mm, 4mm Grinding Beads (Steel)  
G0101-200G/G0102-200G/G0103-200G/  
G0104-200G



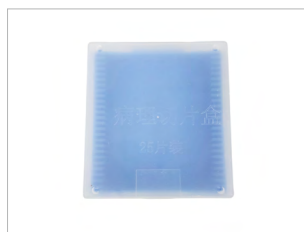
1mm, 2mm, 3mm, 4mm Grinding Beads (Zirconia)  
G0210-100G/G0250-100G/ G0201-150G/G0202-150G/  
G0203-150G/G0204-150G



Adhesion Microscope Slide  
(Paraffin Section)  
G6012-1



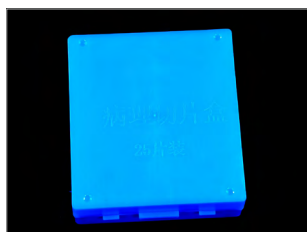
Adhesion Microscope Slide  
(Frozen Section)  
G6012-2



Slides Box  
(Transparent 25 Grids)  
G5057-T



Slides Box  
(Transparent 50 Grids)  
G5056-T



Slides Box  
(Lightproof 25 Grids)  
G5057-B



Slides Box  
(Lightproof 50 Grids)  
G5056-B



Immunohistochemistry Pen  
(Liquid Blocker PAP Pen)  
G6100



Antigen Retrieval Box  
WGXFHA0008

# Consumables

## Other Consumables



Colloidal Gold Shell  
QK-01



S/M/L/XL Disposable Nitrile Gloves  
GN1801S/GN1801M/GN1801L/  
GN1801XL



# Reagent

## Culture Media



DMEM/High Glucose



DMEM/Low Glucose



RPMI-1640 Medium



RPMI-1640 Medium,  
HEPES



RPMI-1640 Medium,  
GlutaMAX-I Supplement



McCoy's 5A Modified



McCoy's 5A Modified,  
HEPES



DMEM/F-12



DMEM/F-12, HEPES



Ham's F-12



Ham's F-12K



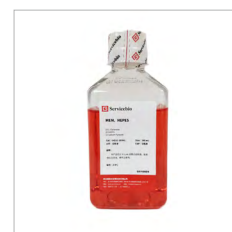
MEM



MEM, with NEAA



α-MEM



MEM HEPES

## DMEM/F-12

| Cat. No.    | Sodium Bicarbonate/mM | D-glucose/mM | L-Glutamine/mM | Alanyl-Glutamine/mM | Sodium Pyruvate/mM | HEPES/mM | NEAA | PSP |
|-------------|-----------------------|--------------|----------------|---------------------|--------------------|----------|------|-----|
| G4610-500ML | 29.02                 | 17.5         | 2.5            | -                   | 0.5                | -        | +    | +   |
| G4611-500ML | 29.02                 | 17.5         | -              | -                   | 0.5                | -        | +    | +   |
| G4612-500ML | 14.27                 | 17.5         | 2.5            | -                   | 0.5                | 15       | +    | +   |
| G4613-500ML | 14.27                 | 17.5         | -              | -                   | 0.5                | 15       | +    | +   |

## DMEM/High Glucose

| Cat. No.    | Sodium Bicarbonate/mM | D-glucose/mM | L-Glutamine/mM | Alanyl-Glutamine/mM | Sodium Pyruvate/mM | HEPES/mM | NEAA | PSP |
|-------------|-----------------------|--------------|----------------|---------------------|--------------------|----------|------|-----|
| G4511-500ML | 44.04                 | 25.0         | 4.0            | -                   | 1.0                | -        | +    | +   |
| G4611-500ML | 44.04                 | 25.0         | -              | 4.0                 | 1.0                | -        | +    | +   |
| G4512-500ML | 44.04                 | 25.0         | 4.0            | 4.0                 | -                  | 10       | +    | +   |
| G4513-500ML | 44.04                 | 25.0         | -              | -                   | -                  | 10       | +    | +   |

# Reagent

## DMEM/Low Glucose

| Cat. No.    | Sodium Bicarbonate/mM | D-glucose/mM | L-Glutamine/mM | Alanyl-Glutamine/mM | Sodium Pyruvate/mM | HEPES/mM | NEAA | PSP |
|-------------|-----------------------|--------------|----------------|---------------------|--------------------|----------|------|-----|
| G4520-500ML | 44.04                 | 5.56         | 4.0            | -                   | 1.0                | -        | +    | +   |
| G4521-500ML | 44.04                 | 5.56         | -              | -                   | -                  | 1.0      | +    | +   |

## MEM

| Cat. No.    | Sodium Bicarbonate/mM | D-glucose/mM | L-Glutamine/mM | Alanyl-Glutamine/mM | Sodium Pyruvate/mM | HEPES/mM | NEAA | PSP |
|-------------|-----------------------|--------------|----------------|---------------------|--------------------|----------|------|-----|
| G4550-500ML | 26.19                 | 5.56         | -              | -                   | -                  | -        | +    | +   |
| G4551-500ML | 26.19                 | 5.56         | 2.0            | -                   | -                  | 25       | +    | +   |
| G4552-500ML | 26.19                 | 5.56         | 2.0            | -                   | -                  | 25       | +    | +   |
| G4553-500ML | 26.19                 | 5.56         | -              | -                   | -                  | -        | +    | +   |


## RPMI-1640

| Cat. No.    | Sodium Bicarbonate/mM | D-glucose/mM | L-Glutamine/mM | Alanyl-Glutamine/mM | Sodium Pyruvate/mM | HEPES/mM | NEAA | PSP |
|-------------|-----------------------|--------------|----------------|---------------------|--------------------|----------|------|-----|
| G4530-500ML | 23.8                  | 11.1         | 2.05           | -                   | -                  | -        | +    | +   |
| G4531-500ML | 23.8                  | 11.1         | -              | 2.05                | -                  | -        | +    | +   |
| G4532-500ML | 23.8                  | 11.1         | -              | 2.05                | -                  | 10       | +    | +   |
| G4533-500ML | 23.8                  | 11.1         | 2.05           | -                   | -                  | 10       | +    | +   |

## McCoy'5A Modified

| Cat. No.    | Sodium Bicarbonate/mM | D-glucose/mM | L-Glutamine/mM | Alanyl-Glutamine/mM | Sodium Pyruvate/mM | HEPES/mM | NEAA | PSP |
|-------------|-----------------------|--------------|----------------|---------------------|--------------------|----------|------|-----|
| G4540-500ML | 26.19                 | 16.67        | 1.5            | -                   | -                  | -        | +    | +   |
| G4541-500ML | 26.19                 | 16.67        | 1.5            | -                   | -                  | 25       | +    | +   |

## Commonalities

| Picture   | Sterilization         | PH       | Packing                                   | Carton Size      | Validity  | Storage Condition |
|---|-----------------------|----------|---|------------------|-----------|-------------------|
|  | 0.1µm filter membrane | 7.2--7.4 | 500mL/bottle, 0.55kg/bottle,25bottles/ctn | 41*41*19.5cm     | 12 months | 2-8°C             |
|   |                       |          | 500mL/bottle, 0.55kg/bottle,32bottles/ctn | 33.5*33.5*36.5cm |           |                   |

### Note:

1. This product has been filtered sterilization. Aseptic contamination shall be avoided during usage.
2. In order to maintain the best effect of usage, avoiding freeze and thaw.
3. This product is only used for lab research, not for diagnosis and treatment.

# Reagent

## Buffer



1×TBS Buffer



10×TBS Buffer



1×PBS Buffer



10×PBS Buffer



10×TBST Buffer



DPBS Buffer



HBSS Buffer



Virus Preservation Solution

## Powder



LB Liquid Medium  
(Dry Powder)  
G3102-100mL



LB Solid Medium  
(Dry Powder)  
G3101-100mL



TBS Buffer  
(Dry Powder)  
G0001-2L



PBS Buffer  
(Dry Powder)  
G0002-2L



SDS-PAGE Transfer Buffer  
(Powder)  
G2017-1L



SDS-PAGE Running Buffer  
(Powder)  
G2018-1L



SweRapid-High Resolution  
Running Buffer (Powder)  
G2081-1L



Recombinant Proteinase K  
(Powder)  
G1237-500MG/G1237-10G/  
G1237-1G

# Reagent

## Reagent-Molecular Assay



RNAsolid Tissue RNA Preserving Solution  
G3019-100mL



RNA Extraction Solution  
G3013-100mL



SweScript RT I First Strand cDNA Synthesis Kit (With gDNA Remover)  
G3337



2x Universal Blue SYBR Green qPCR Master Mix  
G3326



Nucleic Acid Remover  
G3020-250mL

### Nucleic Acid Preservation & Remover

| Item Name                               | Item number | Packing Spec. |
|---|-------------|---------------|
| RNAsolid Tissue RNA Preserving Solution | G3019-100ML | 100mL         |
| Nucleic Acid Remover                    | G3020-250ML | 250mL         |
| RNA Storage Solution                    | G3029-10ML  | 10mL          |

### Nucleic Acid Extraction

| Item Name                           | Item number | Packing Spec. |
|-------------------------------------|-------------|---------------|
| RNA Extraction Solution             | G3013-100ML | 100mL         |
| Recombinant Proteinase K (20 mg/mL) | G1234-1ML   | 1mL           |
| Recombinant Proteinase K (Powder)   | G1237-10G   | 10g           |
| Recombinant Proteinase K (Powder)   | G1237-1G    | 1g            |
| Recombinant Proteinase K (Powder)   | G1237-500MG | 500mg         |

### Reverse Transcription

| Item Name  | Item number | Packing Spec. |
|--|-------------|---------------|
| SweScript RT II First Strand cDNA Synthesis Kit (With gDNA Remover)                        | G3333-100   | 100rxns       |
| SweScript RT II First Strand cDNA Synthesis Kit (With gDNA Remover)                        | G3333-50    | 50rxns        |
| SweScript All-in-One First-Strand cDNA Synthesis SuperMix for qPCR (One-Step gDNA Remover) | G3337-100   | 100rxns       |
| SweScript All-in-One First-Strand cDNA Synthesis SuperMix for qPCR (One-Step gDNA Remover) | G3337-50    | 50rxns        |

### PCR Amplification

| Item Name                                   | Item number | Packing Spec. |
|---|-------------|---------------|
| 2xUniversal Blue SYBR Green qPCR Master Mix | G3326-01    | 1 mL          |
| 2xUniversal Blue SYBR Green qPCR Master Mix | G3326-05    | 5x1 mL        |
| 2xUniversal Blue SYBR Green qPCR Master Mix | G3326-15    | 15x1 mL       |



# Reagent

## Nucleic Acid Electrophoresis

| Item Name                                       | Item number | Packing Spec. |
|---|-------------|---------------|
| 50×TAE  | G3001-500ML | 500mL         |
| 10×TBE  | G3002-250ML | 250mL         |
| 6×DNA Loading Buffer                            | G3011-500UL | 500μL         |
| 2×RNA Loading Buffer                            | G3370-500UL | 500μL         |
| SerRed Nucleic Acid Dye (10000×, water soluble) | G3606-100UL | 100μL         |
| SerRed Nucleic Acid Dye (10000×, water soluble) | G3606-500UL | 500μL         |
| High Purity Low Electroosmotic Agarose          | G5056-5G    | 5g            |

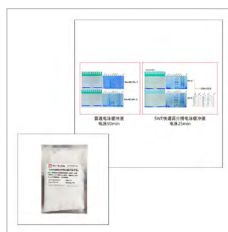
## Reagent-Protein Assay



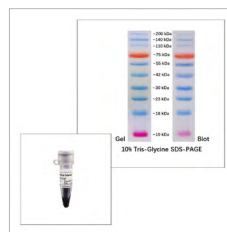
RIPA Lysis Buffer  
(Strong)



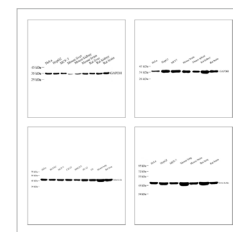
SDS-PAGE Color Gel  
Preparation Kit



SweRapid High-Reso-  
lution Running Buffer  
(Powder)



Prestained Protein  
Marker II (10-200 kDa)



Loading Control  
Antibody

## Protein Extraction

| Item Name                           | Item number | Packing Spec. |
|-------------------------------------|-------------|---------------|
| RIPA Lysis Buffer(Strong)           | G2002-100ML | 100mL         |
| RIPA Lysis Buffer(Weak)             | G2033-100ML | 100mL         |
| IP Lysis Buffer                     | G2038-100ML | 100mL         |
| Proteinase Inhibitor Cocktail (50×) | G2006-250UL | 250μL         |
| Phosphorylase Inhibitor             | G2007-1ML   | 1mL           |
| PMSF (100mM)                        | G2008-1ML   | 1mL           |

# Reagent

## Gel-preparation

| Item Name  | Item number | Packing Spec. |
|--|-------------|---------------|
| SDS-PAGE Gel Kit                                   | G2003-50T   | 50T           |
| Rapid SDS-PAGE Gel Kit                             | G2037-50T   | 50T           |
| 6% SDS-PAGE Color (Red) Gel Kit                    | G2041-50T   | 50T           |
| 8% SDS-PAGE Color (Red) Gel Kit                    | G2042-50T   | 50T           |
| 10% SDS-PAGE Color (Red) Gel Kit                   | G2043-50T   | 50T           |
| 12% SDS-PAGE Color (Red) Gel Kit                   | G2044-50T   | 50T           |
| 15% SDS-PAGE Color (Red) Gel Kit                   | G2045-50T   | 50T           |
| 6% SDS-PAGE Color (Green) Gel Kit                  | G2060-50T   | 50T           |
| 8% SDS-PAGE Color (Green) Gel Kit                  | G2061-50T   | 50T           |
| 10% SDS-PAGE Color (Green) Gel Kit                 | G2062-50T   | 50T           |
| 12% SDS-PAGE Color (Green) Gel Kit                 | G2063-50T   | 50T           |
| 15% SDS-PAGE Color (Green) Gel Kit                 | G2064-50T   | 50T           |
| 8% SDS-PAGE High-resolution Color (Red) Gel Kit    | G2066-50T   | 50T           |
| 10% SDS-PAGE High-resolution Color (Red) Gel Kit   | G2067-50T   | 50T           |
| 12% SDS-PAGE High-resolution Color (Red) Gel Kit   | G2068-50T   | 50T           |
| 8% SDS-PAGE High-resolution Color (Green) Gel Kit  | G2071-50T   | 50T           |
| 10% SDS-PAGE High-resolution Color (Green) Gel Kit | G2072-50T   | 50T           |
| 12% SDS-PAGE High-resolution Color (Green) Gel Kit | G2073-50T   | 50T           |

## Protein Electrophoresis

| Item Name   | Item number | Packing Spec. |
|---|-------------|---------------|
| Prestained Protein Marker II (10-200 kDa)                   | G2058-250UL | 250 $\mu$ L   |
| Prestained Protein Marker III (12-190 kDa)                  | G2082-250UL | 250 $\mu$ L   |
| Western Protein Marker I (Exposure)                         | G2086-250UL | 250 $\mu$ L   |
| SDS-PAGE Running Buffer (Powder)                            | G2018-1L    | 1L            |
| BTT Running Buffer (25 $\times$ )                           | G2050-500ML | 500mL         |
| SweRapid-High Resolution Running Buffer (Powder)            | G2081-1L    | 1L            |
| 5 $\times$ SDS-PAGE Loading Buffer (Odorless, Reduced Type) | G2075-1ML   | 1mL           |
| 2 $\times$ SDS-PAGE Loading Buffer (Odorless, Reduced Type) | G2076-1ML   | 1mL           |

# Reagent

## Protein Transfer

| Item Name                         | Item number | Packing Spec. |
|-----------------------------------|-------------|---------------|
| TBS Buffer (Powder)               | G0001-2L    | 2L            |
| PBS Buffer (Powder)               | G0002-2L    | 2L            |
| 10×TBST                           | G0004-500ML | 500mL         |
| 10×TBS                            | G0015-500ML | 500mL         |
| SDS-PAGE Transfer Buffer (Powder) | G2017-1L    | 1L            |

## Antibody

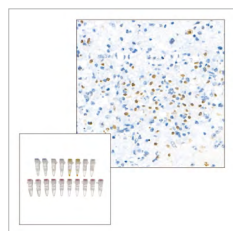
| Item Name  | Item number                        | Packing Spec. |
|--|------------------------------------|---------------|
| Primary Antibodies                                   | More than 4000 kinds of antibodies |               |
| Recombinant Anti - beta Actin Antibody ( Mouse mAb ) | GB15001                            | 100μL         |
| Anti - GAPDH Rabbit pAb                              | GB11002                            | 100μL         |
| HRP Conjugated Rabbit Anti-goat IgG (H+L)            | GB23204                            | 100μL         |
| HRP Conjugated Goat Anti-mouse IgG (H+L)             | GB23301                            | 100μL         |
| HRP Conjugated Goat Anti-rat IgG (H+L)               | GB23302                            | 100μL         |
| HRP Conjugated Goat Anti-rabbit IgG (H+L)            | GB23303                            | 100μL         |
| HRP Conjugated Donkey Anti-goat IgG (H+L)            | GB23404                            | 100μL         |

## ECL Kit

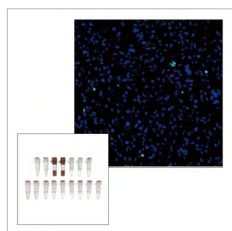
| Item Name                                 | Item number | Packing Spec. |
|---|-------------|---------------|
| Ultra-sensitive ECL Chemiluminescence Kit | G0002-2L    | 2L            |
| ECL Chemiluminescence Kit                 | G2014-50ML  | 50mL          |

# Reagent

## Reagent-Cell Assay



DAB (SA-HRP) TUNEL Cell Apoptosis Detection Kit



CF488 TUNEL Cell Apoptosis Detection Kit



Annexin V-PE/7-AAD Cell Apoptosis Detection Kit



Cell Cycle and Apoptosis Kit



MTT Kit

## Cell Separation and Digestion

| Item Name   | Item number | Packing Spec. |
|---|-------------|---------------|
| Red Blood Cell Lysis Buffer                           | G2015-500ML | 500mL         |
| 0.25% Trypsin Digest (with EDTA ,with Phenol Red)     | G4001-100ML | 100mL         |
| 0.25% Trypsin Digest (without EDTA , Phenol Red Free) | G4002-100ML | 100mL         |

## Nucleus Fluorescence Detection

| Item Name                            | Item number | Packing Spec. |
|--------------------------------------|-------------|---------------|
| Hoechst 33258(4µg/mL, Ready to Use)  | G1011-10ML  | 10mL          |
| DAPI (2µg/mL, Ready to Use)          | G1012-100ML | 100mL         |
| DAPI (2µg/mL, Ready to Use)          | G1012-10ML  | 10mL          |
| Propidium Iodide Solution (100µg/mL) | G1021-10ML  | 10mL          |

## Cell Apoptosis Detection

| Item Name   | Item number | Packing Spec. |
|---|-------------|---------------|
| Fluorescein (FITC) TUNEL Cell Apoptosis Detection Kit | G1501 -100T | 100T          |
| TMR (Red) TUNEL Cell Apoptosis Detection Kit          | G1502-100T  | 100T          |
| CF488 TUNEL Cell Apoptosis Detection Kit              | G1504-100T  | 100T          |
| CF640 TUNEL Cell Apoptosis Detection Kit              | G1505-100T  | 100T          |
| DAB (SA-HRP) TUNEL Cell Apoptosis Detection Kit       | G1507-100T  | 100T          |
| Annexin V-EGFP/PI Cell Apoptosis Detection Kit        | G1510-50T   | 50T           |
| Annexin V-FITC/PI Cell Apoptosis Detection Kit        | G1511-50T   | 50T           |
| Annexin V-PE/7-AAD Cell Apoptosis Detection Kit       | G1512-50T   | 50T           |
| Annexin V-IF488/PI Cell Apoptosis Detection Kit       | G1513-50T   | 50T           |
| Annexin V-IF647/PI Cell Apoptosis Detection Kit       | G1514-50T   | 50T           |
| Calcein AM Cell Activity Test Reagent Kit             | G1609-100T  | 100T          |
| Cell Cycle and Apoptosis Kit                          | G1700-50T   | 50T           |



# Reagent

## Cell Proliferation Detection

| Item Name                                   | Item number | Packing Spec. |
|---|-------------|---------------|
| Cell Proliferation MTT Kit                  | G4101-1000T | 1000T         |
| Cell Counting Kit-8(CCK-8 Kit)              | G4103-5mL   | 5mL           |
| MTT Cell Proliferation and Cytotoxicity Kit | G4104-100T  | 100T          |

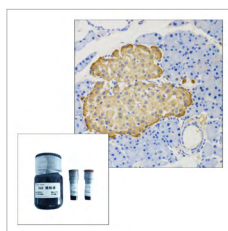
## Reagent-Pathological



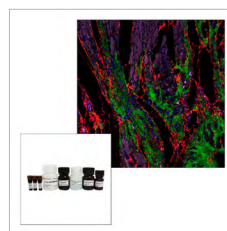
Paraformaldehyde Fixative (Neutral)



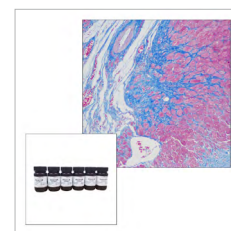
Haematoxylin Eosin (HE) Staining Kit



Immunohistochemistry Kit (Anti-rabbit Secondary Antibody)



TSAPLus Fluorescence Triple Staining Kit



Masson Staining Kit

## Fixative & Dewaxing Liquid

| Item Name  | Item number | Packing Spec. |
|--|-------------|---------------|
| Paraformaldehyde Fixative (Neutral)                | G1101-500ML | 500mL         |
| Environmental Friendly Dewaxing Transparent Liquid | G1128-500ML | 500mL         |

## Staining Solution

| Item Name                            | Item number | Packing Spec. |
|--------------------------------------|-------------|---------------|
| Eosin Y (Alcohol)                    | G1001-500ML | 500mL         |
| Eosin Y (Aqueous)                    | G1002-500ML | 500mL         |
| Haematoxylin Solution                | G1004-100ML | 100mL         |
| Haematoxylin Eosin (HE) Staining Kit | G1005-100ML | 100mL         |
| Haematoxylin Differentiate Solution  | G1039-500ML | 500mL         |
| Dilute Ammonia Solution              | G1040-500ML | 500mL         |
| Masson Tricolor Staining Kit         | G1006-100ML | 100mL         |

## Antigen-Retrieval Solution

| Item Name  | Item number | Packing Spec. |
|--|-------------|---------------|
| Citric Acid Antigen-retrieval Buffer (Dry Powder)  | G1201-1L    | 1L            |
| 20x Citric Acid Antigen-retrieval Solution(PH 6.0) | G1202-250ML | 250mL         |
| 20x Tris-EDTA Antigen-retrieval Solution(PH 9.0)   | G1203-250ML | 250mL         |
| 20x Tris-EDTA Antigen-retrieval Solution(PH 8.0)   | G1206-250ML | 250mL         |

# Reagent

## Immunohistochemistry Kit

| Item Name  | Item number | Packing Spec. |
|--|-------------|---------------|
| DAB Kit  | G1212-200T  | 200T          |
| Immunohistochemistry Kit(HRP-conjugated Goat Anti-Rabbit IgG(H+L)) | G1215-200T  | 200T          |
| Immunohistochemistry Kit(HRP-conjugated Goat Anti-Mouse IgG(H+L))  | G1216-200T  | 200T          |
| HRP-conjugated Goat Anti-Rabbit IgG(H+L)                           | G1213-100UL | 100µL         |
| HRP-conjugated Goat Anti-Mouse IgG(H+L)                            | G1214-100UL | 100µL         |

## Immunofluorescence Staining Kit

| Item Name                                 | Item number | Packing Spec. |
|---|-------------|---------------|
| TSA PLus Fluorescence Double Staining Kit | G1226-100T  | 100T          |
| TSA Fluorescence Double Staining Kit      | G1235-100T  | 100T          |
| TSA PLus Fluorescence Triple Staining Kit | G1236-100T  | 100T          |

## Mounting Media

| Item Name                                  | Item number | Packing Spec. |
|--|-------------|---------------|
| Ultra-clean Fast Drying Mounting Media     | G1404-100ML | 100mL         |
| SWE Environmental Friendly BioMount Media  | G1405-100ML | 100mL         |
| Tissue Autofluorescence Quencher           | G1221-5ML   | 5mL           |
| Anti Fluorescence Quenching Mounting Media | G1401-5ML   | 5mL           |

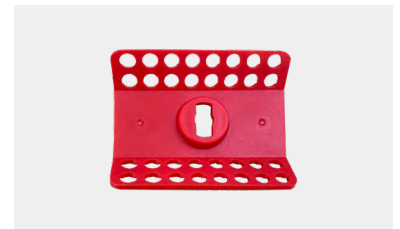
# Instruments



- Rotating Speed: 7000RPM
- Power: 24W
- Rotor: compatible with 0.2/0.5/1.5mL centrifuge tube



0.5mL rotor



0.2mL rotor

## Mini Centrifuge

- Centrifuging 8×1.5mL or 10×0.5mL or 4×0.2mL 8 row tubes at the same time.
- Loaded with 0.2mL or 0.5mL or 1.5mL test-tube rotors.
- Easy installation and rotor replacement without tool.
- Low operating noise, stable performance.
- Exquisite mainframe, one-touch operation.
- Stopping operation once the lid is open.

- Voltage: 110-240 (VAC)
- Speed: 2200RPM
- Power: 6.6W



## Magnetic Stirrer

- Wide voltage input 110-240 (VAC), high voltage adaptability, energy saving and durable.
- Rotating speed: 0-2200RPM.
- Fully enclosed flame retardant plastic enclosure.
- Plastic tray can be anti-splash water and anti-rust.

- Rotating Speed: 2850RPM
- Power: 60W



## Vortex Mixer

- Suitable for short time operation or long time continuous work.
- Running speed, 2850RPM.
- Compact, super shockproof, suitable for high speed operation.
- Stable and reliable

# Instruments



- Operation Mode: Horizontal
- Product Power: 25W
- Voltage: 110V~220V 50Hz/60Hz
- Tray Size: 338\*308mm
- Maximum Load: 5Kg
- Speed Range: 5-200 rpm
- Radius of Gyration: 15mm
- Overall Size: 380\*330\*148mm
- Timing Range: 0-999H59M
- Net Weight: 7.6Kg

## Shaker (Horizontal) DS-2H200

- Automatic leveling shutdown function: Avoid long time tilt of samples after shutdown, dry film, and other conditions affecting the results of the experiment.
- Larger tray, using stepper motor, low noise and more reliable.
- Long time operation without heating;
- Large digital display screen, intuitive display of running speed, running time
- Timing function, buzzer reminder, end operation.



- Operation Mode: Pendulum
- Product Power: 25W
- Voltage: 110V~220V 50Hz/60Hz
- Tray Size: 338\*308mm
- Maximum Load: 5Kg
- Speed Range: 5-100 rpm
- Swinging Angle: 10°
- Overall Size: 380\*330\*173mm
- Timing Range: 0-999H59M
- Net Weight: 8.5Kg

## Shaker (Pendulum) DS-2S100

- Automatic leveling shutdown function: Avoid long time tilt of samples after shutdown, dry film, and other conditions affecting the results of the experiment.
- Larger tray, using stepper motor, low noise and more reliable.
- Long time operation without heating;
- Large digital display screen, intuitive display of running speed, running time
- Timing function, buzzer reminder, end operation.

# Instruments



- Operation Mode: horizontal, pendulum and 3D composite, which can be adjusted freely.
- Power: 25W
- Voltage: 110V~220V 50Hz/60Hz
- Tray Size: 338\*308mm
- Maximum Load: 5Kg
- Speed Range:  
Horizontal mode: 5-100 rpm  
Pendulum mode: 5-100 rpm  
3D composite mode: 5-100 rpm
- Radius of Gyration/Swing Angle:  
Radius of gyration in horizontal mode: 15mm  
Swing angle in pendulum mode: 10°  
3D composite mode: 10%-100%;
- Overall Size: 380\*330\*180 mm;
- Timing Range: 0-999H59M
- Net Weight: 9.5Kg

## 3D Shaker DS-3D100

- Pendulum mode, horizontal mode and composite mode can be used alone;
- Automatic leveling function, which will automatically level after the operation of any mode;
- The compound operation mode can achieve the best effect by adjusting the level and the relative operation speed of the pendulum;
- Using stepper motor, the speed is more accurate; the shell is integrally formed, leak-proof; the base plate is treated with anti-rust treatment, which is more durable.

# Instruments



## Vertical Electrophoresis Tank SVE-2

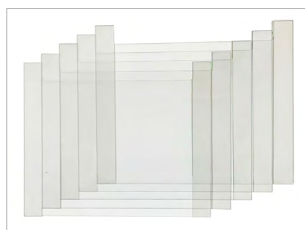
- In situ glue making mode, anti-reverse design of electrophoresis core and electrophoresis cover, to avoid the reversal of negative and positive poles; Take it with one hand without worrying about the separation of the slot cover, the detailed design makes it easy to pull out the cover;
- Rubber base, the product does not use the spring knob to lock, so as to avoid spring aging, lax sealing and other problems;
- The card plate is matched with the whole gland, so that the plane force of the glass plate is higher and to avoid the different thicknesses of glue.
- Less electrophoresis solution is required, 300ml is enough;
- It can be used with SVT-2 transfer electrophoresis tank.



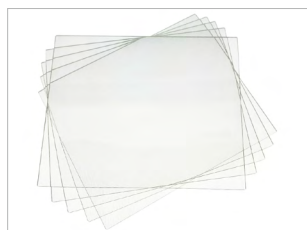
## Transfer Electrophoresis Tank SVT-2

- Double plate structure, can be used with SVE-2 electrophoresis tank.
- The water tank of the instrument is integrated injection molding with high transparency polycarbonate, it's corrosion resistance, high transparency, product stability, etc..
- The positive and negative poles of the transfer clip are distinct, and there's a handle, which makes it easy to operate.
- High transfer efficiency, transfer time is about 20-40min.
- Stable structure material, can be synchronized with the ice bath cooling to avoid interference caused by overheating, so as to ensure reliable experimental results.

## Related Consumables



Hollow Glass Plate



Flat Glass Plate



Transfer Filter Paper



Transfer Sponge



# Instruments



High-speed Room-temperature Homogenizer  
KZ-III



High-speed Low-temperature Homogenizer(-30°C)  
KZ-III-FP



3D High-speed Low-temperature Homogenizer(-40°C)  
KZ-5F-3D

- **Large sample quantity:** 24 samples can be ground within one minute.
- **No cross-contamination:** Samples are placed in different tubes that are fully closed during grinding process, avoiding cross-contamination between samples.
- **Easy operation:** Grinding time and frequency can be easily set at any time during the operation process.
- **Greater safety:** The machine is running with a protective cover and can be stopped at any time by the emergency button.
- **Reproducible result:** Under the same grinding condition, the same batch of samples have the same grinding results.
- **No sample transfer:** After grinding, the samples can be directly centrifuged without transferring to new tubes.

## In homogenization



Load grinding beads



Load tissue and buffer



Put centrifuge tubes in the adapter



Grinding for one minute

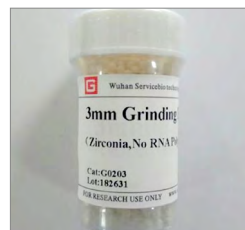
## Related Consumables



3mm Grinding Beads (Steel)



4mm Grinding Beads (Steel)



3mm Grinding Beads (Zirconia)

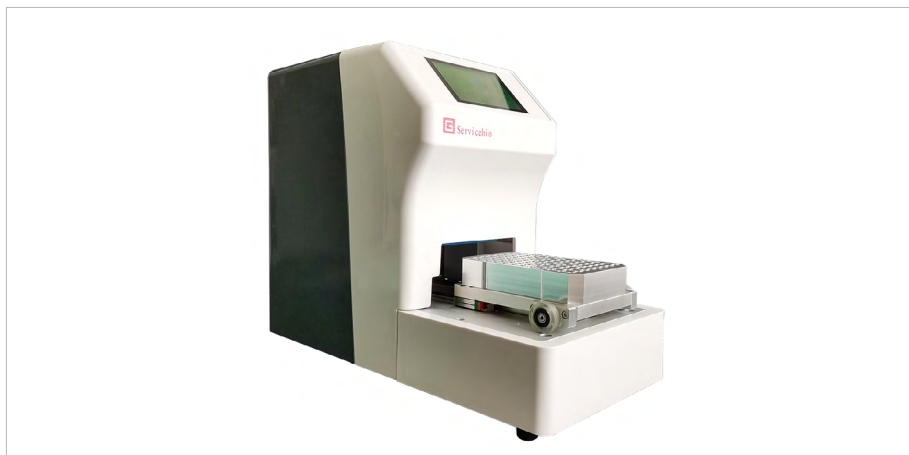


4mm Grinding Beads (Zirconia)



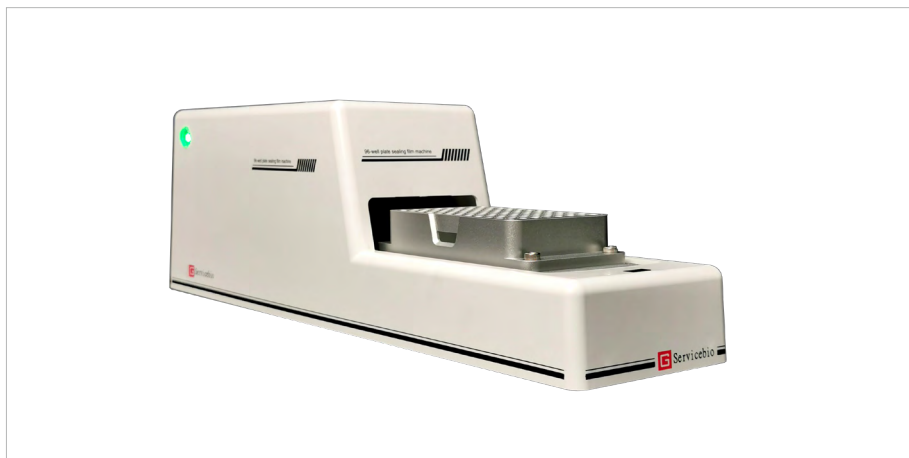
Grinding Tube

# Instruments



## PCR Plate Sealer (Smart) FS-A20

- Touch screen display, convenient and intuitive operation
- Excellence Sealing, no evaporation, good consistency
- Fast and efficient, 20 seconds to complete filming
- Flexible and adjustable parameters with the rolling frequency (1-9999) and rolling values (1-3)
- Quiet for comfortable working environment.
- Adapters are easy to replace and can be customized according to experimental requirements



## PCR Plate Sealer (Portable) FS-E30

- Simple operation and reliable sealing
- Automatic rolling mode, no need for personnel to operate
- One time complete sealing within 30 seconds, high efficiency
- Intelligent touch of entrance and exit control; Preventing problems such as samples not being placed properly or personnel making mistakes in operation, timely touch the switch can withdraw the samples from the working chamber
- Small footprint, light weight, easy placing and moving at will
- The status light can visually judge the machine status.

Yellow light: standby state,

Green light: running state,

Red light: abnormal state,

Whenever red light is on, the machine can be restarted directly. And it can be used normally after automatic initialization.

# Instruments



- Temperature control range: room temperature + (5°C -100°C )
- Timing range: 0-99h 59min
- Heating time: room temperature to 100°C ≤12min
- Temperature control accuracy: ≤ ±0.3°C
- Temperature uniformity: ≤ ±0.5°C

**Dry Bath (Room Temperature + (5 °C -100°C )) SMP-H**



1. Temperature control range: 0°C -100°C
2. Timing range: 0-99h 59min
3. Heating time: room temperature to 100°C ≤12min
4. Cooling time: Drop 20°C from Room Temperature ≤15min
5. Temperature control accuracy: ≤ ±0.3°C
6. Temperature uniformity: ≤ ±0.5°C

**Dry Bath (0°C -100°C ) SMP-C**



1. Temperature control range: 0°C -100°C
2. Timing range: 0-99h 59min
3. Heating time: room temperature to 100°C ≤12min
4. Cooling time: Drop 20°C from Room Temperature ≤15min
5. Temperature control accuracy: ≤ ±0.3°C
6. Temperature uniformity: ≤ ±0.5°C
7. Can store 10 groups of programs, easy to use;
8. Built-in chip, intelligent temperature setting program, gradient running.

**Dry Bath (0°C -100°C Programmable) SMP-PC**

# Consumables Summary

## Consumables

| Name  | Item No.  | Packing       |                |
|---|---|---------------|----------------|
| Pipette Tips without Filter   | 10µL Long Pipette Tips(RNase &DNase Free, Sterilized by Radiation,in Bulk)                      | TP-10P        | 1000pcs/bag    |
|   | 200µL Pipette Tips(RNase &DNase Free, Sterilized by Radiation,in Bulk)                          | TP-200        | 1000pcs/bag    |
|   | 1000µL Pipette Tips(RNase &DNase Free, Sterilized by Radiation,in Bulk)                         | TP-1000       | 500pcs/bag     |
|   | 1000µL Long Pipette Tips(RNase &DNase Free, Sterilized by Radiation,in Bulk)                    | TP-1250       | 500pcs/bag     |
|   | 5mL(Narrow Caliber) Pipette Tips(RNase &DNase Free, Sterilized by Radiation,in Bulk)            | TP-5000S      | 100pcs/bag     |
|   | 5mL (Wide Caliber)Pipette Tips(RNase &DNase Free, Sterilized by Radiation,in Bulk)              | TP-5000L      | 100pcs/bag     |
|   | 5mL(Narrow Caliber) Pipette Tips(RNase &DNase Free, Sterilized by Radiation.Individual Packing) | TP-5001S      | 1000pcs/carton |
|   | 5mL (Wide Caliber)Pipette Tips(RNase &DNase Free, Sterilized by Radiation.Individual Packing)   | TP-5001L      | 1000pcs/carton |
|   | 10mL Pipette Tips(RNase &DNase Free, Sterilized by Radiation, in Bulk)                          | TP-10000      | 1000pcs/carton |
|   | 10µL Long Pipette Tips(RNase &DNase Free, Sterilized by Radiation,in Rack)                      | TP-10P-C      | 96pcs/rack     |
|   | 200µL Pipette Tips(RNase &DNase Free, Sterilized by Radiation,in Rack)                          | TP-200-C      | 96pcs/rack     |
|   | 1000µL Pipette Tips(RNase &DNase Free, Sterilized by Radiation, in Rack)                        | TP-1000S-C    | 96pcs/rack     |
|   | 1000µL Long Pipette Tips(RNase &DNase Free, Sterilized by Radiation,in Rack)                    | TP-1000-C     | 96pcs/rack     |
|   | 10mL Pipette Tips(RNase &DNase Free, Sterilized by Radiation, in Rack)                          | TP-10000-C    | 24pcs/rack     |
| Filter Pipette Tips   | 10µL Long Fliter Tips(RNase &DNase Free, Sterilized by Radiation,in Bulk)                       | TP-10P-F      | 1000pcs/bag    |
|   | 20µL Fliter Tips(RNase &DNase Free, Sterilized by Radiation,in Bulk)                            | TP-20-F       | 1000pcs/bag    |
|   | 100µL Fliter Tips(RNase &DNase Free, Sterilized by Radiation,in Bulk)                           | TP-100-F      | 1000pcs/bag    |
|   | 200µL Fliter Tips(RNase &DNase Free, Sterilized by Radiation,in Bulk)                           | TP-200-F      | 1000pcs/bag    |
|   | 1000µL Fliter Tips(RNase &DNase Free, Sterilized by Radiation,in Bulk)                          | TP-1000S-F    | 500pcs/bag     |
|   | 1000µL Long Fliter Tips(RNase &DNase Free, Sterilized by Radiation,in Bulk)                     | TP-1000-F     | 500pcs/bag     |
|   | 10mL Filter Tips (RNase&DNase Free, Sterilized by Radiation, Individual Packing)                | TP-10001-F    | 500pcs/carton  |
|   | 5mL(Narrow Caliber) Filter Tips(RNase &DNase Free, Sterilized by Radiation,in Bulk)             | TP-5000S-F    | 100pcs/bag     |
|   | 5mL (Wide Caliber) Filter Tips(RNase &DNase Free, Sterilized by Radiation,in Bulk)              | TP-5000L-F    | 100pcs/bag     |
|   | 5mL (Narrow Caliber) Filter Tips(RNase &DNase Free, Sterilized by Radiation,Individual Packing) | TP-5001S-F    | 100pcs/bag     |
|   | 5mL (Wide Caliber) Filter Tips(RNase &DNase Free, Sterilized by Radiation,Individual Packing)   | TP-5001L-F    | 100pcs/bag     |
|   | 10mL Filter Tips (RNase &DNase Free, Sterilized by Radiation, Individual Packing)               | TP-10001-F    | 50pcs/bag      |
|   | 10µL Long Filter Tips(RNase &DNase Free, Sterilized by Radiation,in Rack)                       | TP-10P-C-F    | 96pcs/rack     |
|   | 20µL Filter Tips(RNase &DNase Free, Sterilized by Radiation,in Rack)                            | TP-20-C-F     | 96pcs/rack     |
|   | 100µL Filter Tips(RNase &DNase Free, Sterilized by Radiation,in Rack)                           | TP-100-C-F    | 96pcs/rack     |
|   | 200µL Filter Tips(RNase &DNase Free, Sterilized by Radiation,in Rack)                           | TP-200-C-F    | 96pcs/rack     |
|   | 1000µL Filter Tips(RNase &DNase Free, Sterilized by Radiation,in Rack)                          | TP-1000S-C-F  | 96pcs/rack     |
|   | 1000µL Long Filter Tips(RNase &DNase Free, Sterilized by Radiation,in Rack)                     | TP-1000-C-F   | 96pcs/rack     |
| 10mL Filter Tips(RNase &DNase Free, Sterilized by Radiation, in Rack) | TP-10000-C-F  | 24pcs/rack    |                |
| Low Retention Tips  | 10µL Long Low-retention Filter Tips(RNase &DNase Free, Sterilized by Radiation,in Rack)         | TP-10PL-C-F   | 96pcs/rack     |
|   | 20µL Low-retention Filter Tips(RNase &DNase Free, Sterilized by Radiation,in Rack)              | TP-20L-C-F    | 96pcs/rack     |
|   | 100µL Low-retention Filter Tips(RNase &DNase Free, Sterilized by Radiation,in Rack)             | TP-100L-C-F   | 96pcs/rack     |
|   | 200µL Low-retention Filter Tips(RNase &DNase Free, Sterilized by Radiation,in Rack)             | TP-200L-C-F   | 96pcs/rack     |
|   | 1000µL Low-retention Filter Tips (RNase &DNase Free, Sterilized by Radiation)                   | TP-1000SL-C-F | 96pcs/rack     |
|   | 1000µL Long Low-retention Filter Tips(RNase &DNase Free, Sterilized by Radiation,in Rack)       | TP-1000L-C-F  | 96pcs/rack     |
| Robotic Filter Pipette Tips   | 250µL Robotic Filter Pipette Tips(RNase &DNase Free, Sterilized by Radiation,in Rack)           | MTP-250-C-F   | 96pcs/rack     |
|   | 1000µL Robotic Filter Pipette Tips(RNase &DNase Free, Sterilized by Radiation,in Rack)          | MTP-1000-C-F  | 96pcs/rack     |

# Consumables Summary

## Consumables

| Name   |   | Item No.      | Packing       |
|--|---|---------------|---------------|
| Robotic Filter Pipette Tips  | 250µL Conductive Filter Pipette Tips(RNase &DNase Free, Sterilized by Radiation,in Rack)  | METP-250-C-F  | 96pcs/rack    |
|  | 1000µL Conductive Filter Pipette Tips(RNase &DNase Free, Sterilized by Radiation,in Rack) | METP-1000-C-F | 96pcs/rack    |
| Centrifuge Tubes   | 1.5mL Sterile Centrifuge Tube(RNase &DNase Free,in Bag)                                   | EP-150-J      | 500pcs/bag    |
|  | 2mL Sterile Centrifuge Tube(RNase &DNase Free,in Bag)                                     | EP-200-J      | 500pcs/bag    |
|  | 15mL Sterile Centrifuge Tube(RNase &DNase Free,in Rack)                                   | EP-1500-J     | 50pcs/rack    |
|  | 15mL Sterile Centrifuge Tube(RNase &DNase Free,in Bag)                                    | EP-1500-BJ    | 50pcs/bag     |
|  | 50mL Sterile Centrifuge Tube(RNase &DNase Free,in Rack)                                   | EP-5000-J     | 25pcs/rack    |
|  | 50mL Sterile Centrifuge Tube(RNase &DNase Free,in Bag)                                    | EP-5000-BJ    | 25pcs/bag     |
|  | 50mL U-bottom Centrifuge Tube(RNase &DNase Free,in Bag)                                   | EP-5010-BJ    | 25pcs/bag     |
|  | 50mL V-bottom Skirted Centrifuge Tube(RNase &DNase Free,in Bag)                           | EP-5020-BJ    | 25pcs/bag     |
|  | 50mL U-bottom Skirted Centrifuge Tube(RNase &DNase Free,in Bag)                           | EP-5030-BJ    | 25pcs/bag     |
|  | 15mL Sterile Centrifuge Tube(RNase &DNase Free,individual Packing)                        | EP-1501-J     | 50pcs/bag     |
| 50mL Sterile Centrifuge Tube(RNase &DNase Free,individual Packing) | EP-5001-J   | 25pcs/bag     |               |
| Centrifuge Tubes Rack & Pipettor Stand                             | 18-well 15mL Centrifuge Tube Rack   | TR-1500       | 65pcs/carton  |
|  | 8-well 50mL Centrifuge Tube Rack  | TR-5000       | 50pcs/carton  |
|  | 5-position Pipettor Stand   | PR-5          | 20pcs/carton  |
| Virus Preservation Tube  | 10mL, Sterilized by Radiation, Packed in Bag  | VT-1000-B-J   | 50pcs/bag     |
|  | 10mL, Sterilized by Radiation, Packed in Rack   | VT-1000-C-J   | 50pcs/rack    |
|  | 30mL, Sterilized by Radiation, Packed in Bag  | EP-3020       | 500pcs/carton |
| Reagent Bottle(PET)  | 125mL Sterile Reagent Bottle(PET), Transparent(RNase & DNase Free)                        | PET-125-T-J   | 147pcs/carton |
|  | 250mL Sterile Reagent Bottle (PET), Transparent(RNase & DNase Free)                       | PET-250-T-J   | 100pcs/carton |
|  | 500mL Sterile Reagent Bottle(PET), Transparent(RNase & DNase Free)                        | PET-500-T-J   | 50pcs/carton  |
|  | 500mL Sterile Reagent Bottle(PET), Light-proof(RNase & DNase Free)                        | PET-500-B     | 50pcs/carton  |
|  | 1000mL Sterile Reagent Bottle(PET), Transparent(RNase & DNase Free)                       | PET-1000-T-J  | 50pcs/carton  |
| Specimen Bottle  | Specimen Bottle(PE), Transparent(RNase & DNase Free)                                      | G6008-40ML    | 500pcs/carton |
| 96 Deep-well Plate   | 2.2mL Sterile 96 Deep-well Plate, U-bottom (RNase &DNase Free)                            | KB-96U20-L    | 16pcs/box     |
|  | 2.2mL Sterile 96 Deep-well Plate, V-bottom (RNase &DNase Free)                            | KB-96V20-L    | 16pcs/box     |
|  | 1.6mL Sterile 96 Deep-well Plate, U-bottom (RNase &DNase Free)                            | KB-96U16-L    | 20pcs/box     |
| Magnetic Tip Comb  | Sterile 96 Magnetic Tip Comb, U-bottom (RNase &DNase Free)                                | CT-96U-L      | 32pcs/box     |
|  | Sterile 96 Magnetic Tip Comb, V-bottom (RNase &DNase Free)                                | CT-96V-L      | 32pcs/box     |
|  | Sterile 8-strip Magnetic Comb, U-bottom (RNase &DNase Free)                               | CT-8U-L       | 24pcs/box     |
| PCR Plate & Sealing Film   | 0.1mL PCR Plate, Non-skirt (RNase &DNase Free)  | PCR-9601-NS   | 10pcs/box     |
|  | 0.1mL PCR Plate, Half-skirt (RNase &DNase Free)   | PCR-9601-HS   | 10pcs/box     |
|  | 0.2mL PCR Plate, Non-skirt(RNase &DNase Free)   | PCR-9602-NS   | 10pcs/box     |
|  | 0.2mL PCR Plate, Half-skirt (RNase &DNase Free)   | PCR-9602-HS   | 10pcs/box     |
|  | 0.1mL PCR Plate, Non-skirt, White (DNase &RNase Free)                                     | PCR-9601W-NS  | 10pcs/box     |
|  | 0.1mL PCR Plate, Half-skirt, White (DNase &RNase Free)                                    | PCR-9601W-HS  | 10pcs/box     |
|  | 0.2mL PCR Plate, Non-skirt, White (DNase &RNase Free)                                     | PCR-9602W-NS  | 10pcs/box     |
|  | 0.2mL PCR Plate, Half-skirt, White (DNase &RNase Free)                                    | PCR-9602W-HS  | 10pcs/box     |

# Consumables Summary

## Consumables

| Name                |  | Item No.  | Packing            |
|---------------------|--|---|--------------------|
| PCR 8-strip Tube    | PCR Sealing Film, Pressure Sensitive                       | G6065   | 100pcs/box         |
|                     | 100µL PCR 8-strip Tube, with Flat Caps (RNase &DNase Free) | PCR-0801-FC   | 125sets/box        |
|                     | 200µL PCR 8-strip Tube, with Flat Caps (RNase &DNase Free) | PCR-0802-FC   | 125sets/box        |
| 96-well Elisa Plate | Elisa Plate, Detachable, Flat Bottom (RNase &DNase Free)   | ESP-96-D  | 10pcs/box          |
| Cell Culture Plate  | 90mm Bacteriological Petri Dish (Sterile)                  | BPD-90  | 20pcs/bag          |
|                     | 100mm Petri Dish(TC Treated, Sterile)                      | CCD-100   | 20pcs/bag          |
|                     | 6-well Cell Culture(TC Treated, Sterile)                   | CCP-6H  | 1pc/bag            |
|                     | 96-well Cell Culture(TC Treated, Sterile)                  | CCP-96H   | 1pc/bag            |
| Other Consumables   | WB Antibody Incubation Box(Transparent, 2 Grids)           | G6025-2   | 1pc/pack           |
|                     | WB Antibody Incubation Box(Transparent, 4 Grids)           | G6026-4   | 1pc/pack           |
|                     | WB Antibody Incubation Box(Transparent, 9 Grids)           | G6019-9   | 1pc/pack           |
|                     | WB Antibody Incubation Box(Lightproof, 9 Grids)            | G6020-9   | 1pc/pack           |
|                     | Wet Box(Lightproof, 10 Grids)                              | WG525   | 10pcs/box          |
|                     | Wet Box(Lightproof, 20 Grids)                              | WG524   | 20pcs/box          |
|                     | Wet Box(Transparent, 20 Grids)                             | WG526   | 20pcs/box          |
|                     | 81 Cryogenic Storage Box                                   | G9004-81  | 125sets/box        |
|                     | 2mL Cryogenic Vial   | CV-2-ET   | 100pcs/bag         |
|                     | Serological Pipettes                                       | SP-1-F/SP-2-F/SP-5-F/SP-10-F/<br>SP-25-F/SP-50-F                      | Individual Packing |
|                     | Grinding Beads(Steel)                                      | G0101-200G/G0102-200G/<br>G0103-200G/G0104-200G                       | 200g/bottle        |
|                     | Grinding Beads(Zirconia)                                   | G0210-100G/G0250-100G/G0201-150G/<br>G0202-150G/G0203-150G/G0204-150G | 100-150g/bottle    |
|                     | Adhesion Microscope Slide(Paraffin Section)                | G6012-1   | 50pcs/box          |
|                     | Adhesion Microscope Slide(Frozen Section)                  | G6012-2   | 50pcs/box          |
|                     | Slides Box(Transparent 25 Grids)                           | G5057-T   | 1pc/pack           |
|                     | Slides Box(Transparent 50 Grids)                           | G5056-T   | 1pc/pack           |
|                     | Slides Box(Lightproof 25 Grids)                            | G5057-B   | 1pc/pack           |
|                     | Slides Box(Lightproof 50 Grids)                            | G5056-B   | 1pc/pack           |
|                     | Immunohistochemistry Pen(Liquid Blocker PAP Pen)           | G6100   | 1pc/pack           |
|                     | Antigen Retrieval Box                                      | WGXFHA0008  | 26pcs/box          |
|                     | Colloidal Gold Shell                                       | QK-01   |                    |
|                     | Disposable Nitrile Gloves                                  | GN1801S/GN1801M/GN1801L/<br>GN1801XL                                  | 100pcs/box         |



# Reagents Summary

## Reagents

| Item   | Item No.    | Packing      |
|--|-------------|--------------|
| M199   | G4620-500ML | 500mL/bottle |
| IMDM (Iscove's Modified Dulbecco's Medium)                               | G4640-500ML | 500mL/bottle |
| DMEM/High Glucose  | G4510-500ML | 500mL/bottle |
| DMEM/High Glucose, GlutaMAX-I Supplement                                 | G4511-500ML | 500mL/bottle |
| DMEM/High Glucose, GlutaMAX-I, HEPES                                     | G4512-500ML | 500mL/bottle |
| DMEM/High Glucose, HEPES   | G4513-500ML | 500mL/bottle |
| DMEM/High Glucose, without L-glutamine                                   | G4514-500ML | 500mL/bottle |
| DMEM/High Glucose, HEPES, with L-glutamine, contains Sodium Pyruvate     | G4515-500ML | 500mL/bottle |
| DMEM High Glucose, HEPES   | G4516-500ML | 500mL/bottle |
| DMEM High Glucose, HEPES, contains Sodium Pyruvate                       | G4517-500ML | 500mL/bottle |
| DMEM/Low Glucose, with L-glutamine                                       | G4520-500ML | 500mL/bottle |
| DMEM/Low Glucose,HEPES   | G4521-500ML | 500mL/bottle |
| MEM NEAA(100×)   | G4219-100ML | 500mL/bottle |
| MEM, with NEAA   | G4550-500ML | 500mL/bottle |
| MEM, with NEAA, HEPES  | G4551-500ML | 500mL/bottle |
| MEM, HEPES   | G4552-500ML | 500mL/bottle |
| MEM  | G4553-500ML | 500mL/bottle |
| α-MEM(with nucleotide)   | G4554-500ML | 500mL/bottle |
| α-MEM(without nucleotide)  | G4555-500ML | 500mL/bottle |
| RPMI-1640 Medium, with L-glutamine                                       | G4530-500ML | 500mL/bottle |
| RPMI-1640 Medium, GlutaMAX-I Supplement                                  | G4531-500ML | 500mL/bottle |
| RPMI-1640 Medium, GlutaMAX-I Supplement, HEPES                           | G4532-500ML | 500mL/bottle |
| RPMI-1640 Medium, HEPES  | G4533-500ML | 500mL/bottle |
| RPMI-1640 Medium   | G4534-500ML | 500mL/bottle |
| RPMI-1640 Medium, GlutaMAX-I Supplement, HEPES, contains Sodium Pyruvate | G4535-500ML | 500mL/bottle |
| Ham's F-12   | G4562-500ML | 500mL/bottle |
| Ham's F-12 (without L-glutamine )  | G4563-500ML | 500mL/bottle |
| Ham's F-12K  | G4560-500ML | 500mL/bottle |
| Ham's F-12K (without L-glutamine )                                       | G4561-500ML | 500mL/bottle |
| DMEM/F-12  | G4610-500ML | 500mL/bottle |
| DMEM/F-12 (without L-glutamine )   | G4611-500ML | 500mL/bottle |
| DMEM/F-12, HEPES   | G4612-500ML | 500mL/bottle |
| DMEM/F-12, HEPES (without L-glutamine )                                  | G4613-500ML | 500mL/bottle |
| McCoy's 5A Modified  | G4540-500ML | 500mL/bottle |
| McCoy's 5A Modified, HEPES   | G4541-500ML | 500mL/bottle |
| DMEM (without Glucose, with L-glutamine)                                 | G4527-500ML | 500mL/bottle |
| DMEM (without Glucose)   | G4528-500ML | 500mL/bottle |
| RPMI-1640 (without Glucose)  | G4538-500ML | 500mL/bottle |
| 1×TBS Buffer   |             | 500mL/bottle |
| 10×TBS Buffer  | G0015-500ML | 500mL/bottle |
| 1×PBS  | G4202-500ML | 500mL/bottle |
| 10×PBS Buffer  | G4207-500ML | 500mL/bottle |
| 10×TBST Buffer   | G0004-500ML | 500mL/bottle |
| DPBS Buffer  | G4200-500ML | 500mL/bottle |

# Reagents Summary

## Reagents

| Name                                  |  | Item No.                | Packing      |
|---------------------------------------|--|-------------------------|--------------|
| Buffer Solution                       | HBSS Buffer  | G4203/G4204/G4205/G4206 | 500mL/bottle |
|                                       | Virus Preservation Solution  | G4208/G4218/G4209/G4217 | 500mL/bottle |
|                                       | LB Liquid Medium (Dry Powder)  | G3102-100ML             | 100mL/bottle |
|                                       | LB Solid Medium (Dry Powder)   | G3101-100ML             | 100mL/bottle |
|                                       | TBS Buffer (Dry Powder)  | G0001-2L                | 2L/bag       |
|                                       | PBS Buffer (Dry Powder)  | G0002-2L                | 2L/bag       |
|                                       | SDS-PAGE Running Buffer (Powder)   | G2017-1L                | 1L/bag       |
|                                       | Electrophoresis Buffer (Powder)  | G2018-1L                | 1L/bag       |
|                                       | SweRapid-High Resolution Running Buffer (Powder)   | G2081-1L                | 1L/bag       |
| Nucleic Acid Preservation and Remover | RNAsolid Tissue RNA Preserving Solution  | G3019-100ML             | 100mL/bottle |
|                                       | Nucleic Acid Remover   | G3020-250ML             | 250mL/bottle |
|                                       | RNA Storage Solution   | G3029-10ML              | 10mL/bottle  |
| Nucleic Acid Extraction               | RNA Extraction Solution  | G3013-100ML             | 100mL/bottle |
|                                       | Recombinant Proteinase K (20 mg/mL)  | G1234-1ML               | 1mL/bottle   |
|                                       | Recombinant Proteinase K (Powder)  | G1237-10G               | 10g/bottle   |
|                                       | Recombinant Proteinase K (Powder)  | G1237-1G                | 1g/bottle    |
| Reverse Transcription                 | SweScript RT II First Strand cDNA Synthesis Kit (with gDNA Remover)                        | G3333-100               | 100rxns/kit  |
|                                       | SweScript RT II First Strand cDNA Synthesis Kit (with gDNA Remover)                        | G3333-50                | 50rxns/kit   |
|                                       | SweScript All-in-One First-Strand cDNA Synthesis SuperMix for qPCR (One-Step gDNA Remover) | G3337-100               | 100rxns/kit  |
|                                       | SweScript All-in-One First-Strand cDNA Synthesis SuperMix for qPCR (One-Step gDNA Remover) | G3337-50                | 50rxns/kit   |
| PCR Amplification                     | 2×Universal Blue SYBR Green qPCR Master Mix  | G3326-01                | 1mL/kit      |
|                                       | 2×Universal Blue SYBR Green qPCR Master Mix  | G3326-05                | 5mL/kit      |
|                                       | 2×Universal Blue SYBR Green qPCR Master Mix  | G3326-15                | 15mL/kit     |
| Nucleic Acid Electrophoresis          | 50×TAE   | G3001-500ML             | 500mL/bottle |
|                                       | 10×TBE   | G3002-250ML             | 250mL/bottle |
|                                       | 6×DNA Loading Buffer   | G3011-500UL             | bottle       |
|                                       | 2×RNA Loading Buffer   | G3370-500UL             | bottle       |
|                                       | 2×RNA Loading Buffer   | G3370-500UL             | bottle       |
|                                       | SerRed Nucleic Acid Dye (10000×, water soluble)  | G3606-100UL             | bottle       |
|                                       | SerRed Nucleic Acid Dye (10000×, water soluble)  | G3606-500UL             | bottle       |
|                                       | High Purity Low Electrosmotic Agarose  | G5056-5G                | bottle       |
| Protein Extraction                    | RIPA Lysis Buffer(Strong)  | G2002-100ML             | 100mL/bottle |
|                                       | RIPA Lysis Buffer(Weak)  | G2033-100ML             | 100mL/bottle |
|                                       | IP Lysis Buffer  | G2038-100ML             | 100mL/bottle |
|                                       | Proteinase Inhibitor Cocktail (50×)  | G2006-250UL             | 250μL/bottle |
|                                       | Phosphorylase Inhibitor  | G2007-1ML               | 1mL/bottle   |
|                                       | PMSF (100mM)   | G2008-1ML               | 1mL/bottle   |
| Gel-preparation                       | SDS-PAGE Gel Kit   | G2003-50T               | 50T/kit      |
|                                       | Rapid SDS-PAGE Gel Kit   | G2037-50T               | 50T/kit      |
|                                       | 6% SDS-PAGE Color (Red) Gel Kit  | G2041-50T               | 50T/kit      |
|                                       | 8% SDS-PAGE Color (Red) Gel Kit  | G2042-50T               | 50T/kit      |

# Reagents Summary

## Reagents

| Item                           | Item No.  | Packing                            |              |
|--------------------------------|---|------------------------------------|--------------|
| Gel-preparation                | 10% SDS-PAGE Color (Red) Gel Kit                      | G2043-50T                          | 50T/kit      |
|                                | 12% SDS-PAGE Color (Red) Gel Kit                      | G2044-50T                          | 50T/kit      |
|                                | 15% SDS-PAGE Color (Red) Gel Kit                      | G2045-50T                          | 50T/kit      |
|                                | 6% SDS-PAGE Color (Green) Gel Kit                     | G2060-50T                          | 50T/kit      |
|                                | 8% SDS-PAGE Color (Green) Gel Kit                     | G2061-50T                          | 50T/kit      |
|                                | 10% SDS-PAGE Color (Green) Gel Kit                    | G2062-50T                          | 50T/kit      |
|                                | 12% SDS-PAGE Color (Green) Gel Kit                    | G2063-50T                          | 50T/kit      |
|                                | 15% SDS-PAGE Color (Green) Gel Kit                    | G2064-50T                          | 50T/kit      |
|                                | 8% SDS-PAGE High-resolution Color (Red) Gel Kit       | G2066-50T                          | 50T/kit      |
|                                | 10% SDS-PAGE High-resolution Color (Red) Gel Kit      | G2067-50T                          | 50T/kit      |
|                                | 12% SDS-PAGE High-resolution Color (Red) Gel Kit      | G2068-50T                          | 50T/kit      |
|                                | 8% SDS-PAGE High-resolution Color (Green) Gel Kit     | G2071-50T                          | 50T/kit      |
|                                | 10% SDS-PAGE High-resolution Color (Green) Gel Kit    | G2072-50T                          | 50T/kit      |
|                                | 12% SDS-PAGE High-resolution Color (Green) Gel Kit    | G2073-50T                          | 50T/kit      |
| Protein Electrophoresis        | Prestained Protein Marker II (10-200 kDa)             | G2058-250UL                        | 250µL/bottle |
|                                | Prestained Protein Marker III (12-190 kDa)            | G2082-250UL                        | 250µL/bottle |
|                                | Western Protein Marker I (Exposure)                   | G2086-250UL                        | 250µL/bottle |
|                                | Tris-Glycine Running Buffer (Powder)                  | G2018-1L                           | 1L/bag       |
|                                | BTT Running Buffer (25×)                              | G2050-500ML                        | 500mL/bottle |
|                                | SweRapid-High Resolution Running Buffer (Powder)      | G2081-1L                           | 1L/bag       |
|                                | 5 X SDS-PAGE Loading Buffer (Odorless, Reduced Type)  | G2075-1ML                          | 1mL/bottle   |
|                                | 2 X SDS-PAGE Loading Buffer (Odorless, Reduced Type)  | G2076-1ML                          | 1mL/bottle   |
| Protein Transfer               | TBS Buffer (Powder)                                   | G0001-2L                           | 2L/bag       |
|                                | PBS Buffer (Powder)                                   | G0002-2L                           | 2L/bag       |
|                                | 10× TBST  | G0004-500ML                        | 500mL/bottle |
|                                | 10×TBS  | G0015-500ML                        | 500mL/bottle |
|                                | SDS-PAGE Transfer Buffer (Powder)                     | G2017-1L                           | 1L/bag       |
| Antibody                       | Primary Antibodies                                    | More than 4000 kinds of antibodies | pc           |
|                                | Recombinant Anti-beta Actin Antibody ( Mouse mAb )    | GB15001                            | pc           |
|                                | Anti-GAPDH Rabbit pAb                                 | GB11002                            | pc           |
|                                | HRP Conjugated Rabbit Anti-goat IgG (H+L)             | GB23204                            | pc           |
|                                | HRP Conjugated Goat Anti-mouse IgG (H+L)              | GB23301                            | pc           |
|                                | HRP Conjugated Goat Anti-rat IgG (H+L)                | GB23302                            | pc           |
|                                | HRP Conjugated Goat Anti-rabbit IgG (H+L)             | GB23303                            | pc           |
|                                | HRP Conjugated Donkey Anti-goat IgG (H+L)             | GB23404                            | pc           |
| ECL Kit                        | Ultra-sensitive ECL Chemiluminescence Kit             | G2020-25ML                         | 25mL/bottle  |
|                                | ECL Chemiluminescence Kit                             | G2014-50ML                         | 50mL/bottle  |
| Cell Separation and Digestion  | Red Blood Cell Lysis Buffer                           | G2015-500mL                        | 500mL/bottle |
|                                | 0.25% Trypsin Digest (with EDTA ,with Phenol Red)     | G4001-100mL                        | 100mL/bottle |
|                                | 0.25% Trypsin Digest (without EDTA , Phenol Red Free) | G4002-100mL                        | 100mL/bottle |
| Nucleus Fluorescence Detection | Hoechst 33258(4µg/mL, Ready to Use)                   | G1011-10mL                         | 10mL/bottle  |
|                                | DAPI (2µg/mL, Ready to Use)                           | G1012-100mL                        | 100mL/bottle |
|                                | DAPI (2µg/mL, Ready to Use)                           | G1012-10mL                         | 10mL/bottle  |

# Reagents Summary

## Reagents

| Name  | Item No.   | Packing                     |
|---|--|-----------------------------|
| Nucleus Fluorescence Detection              | Propidium Iodide Solution (100µg/mL)                               | G1021-10mL<br>10mL/bottle   |
| Cell Apoptosis Detection                    | Fluorescein (FITC) TUNEL Cell Apoptosis Detection Kit              | G1501 -100T<br>100T/kit     |
|   | TMR (Red) TUNEL Cell Apoptosis Detection Kit                       | G1502-100T<br>100T/kit      |
|   | CF488 TUNEL Cell Apoptosis Detection Kit                           | G1504-100T<br>100T/kit      |
|   | CF640 TUNEL Cell Apoptosis Detection Kit                           | G1505-100T<br>100T/kit      |
|   | DAB (SA-HRP) TUNEL Cell Apoptosis Detection Kit                    | G1507-100T<br>50T/kit       |
|   | Annexin V-EGFP/PI Cell Apoptosis Detection Kit                     | G1510-50T<br>50T/kit        |
|   | Annexin V-FITC/PI Cell Apoptosis Detection Kit                     | G1511-50T<br>50T/kit        |
|   | Annexin V-PE/7-AAD Cell Apoptosis Detection Kit                    | G1512-50T<br>50T/kit        |
|   | Annexin V-IF488/PI Cell Apoptosis Detection Kit                    | G1513-50T<br>50T/kit        |
|   | Annexin V-IF647/PI Cell Apoptosis Detection Kit                    | G1514-50T<br>50T/kit        |
|   | Calcein AM Cell Activity Test Reagent Kit                          | G1609-100T<br>100T/kit      |
|   | Cell Cycle and Apoptosis Kit                                       | G1700-50T<br>50T/kit        |
|   | Cell Proliferation Detection                                       | Cell Proliferation MTT Kit  |
| Cell Counting Kit-8(CCK-8 Kit)              |  | G4103-5ML<br>5mL/bottle     |
| MTT Cell Proliferation and Cytotoxicity Kit |  | G4104-100T<br>100T/kit      |
| Fixative & Dewaxing Liquid                  | Paraformaldehyde Fixative (Neutral)                                | G1101-500ML<br>500mL/bottle |
|   | Environmental Friendly Dewaxing Transparent Liquid                 | G1128-500ML<br>500mL/bottle |
| Staining Solution                           | Eosin Y (Alcohol)  | G1001-500ML<br>500mL/bottle |
|   | Eosin Y (Aqueous)  | G1002-500ML<br>500mL/bottle |
|   | Haematoxylin Solution  | G1004-100ML<br>100mL/bottle |
|   | Haematoxylin Eosin (HE) Staining Kit                               | G1005-100ML<br>100mL/bottle |
|   | Haematoxylin Differentiation Solution                              | G1039-500ML<br>500mL/bottle |
|   | Dilute Ammonia Solution  | G1040-500ML<br>500mL/bottle |
|   | Masson Tricolor Staining Kit                                       | G1006-100ML<br>100mL/bottle |
| Antigen-Retrieval Solution                  | Citric Acid Antigen-retrieval Buffer (Dry Powder)                  | G1201-1L<br>1L/bag          |
|   | 20x Citric Acid Antigen-retrieval Solution(PH 6.0)                 | G1202-250ML<br>250mL/bottle |
|   | 20x Tris-EDTA Antigen-retrieval Solution(PH 9.0)                   | G1203-250ML<br>250mL/bottle |
|   | 20x Tris-EDTA Antigen-retrieval Solution(PH 8.0)                   | G1206-250ML<br>250mL/bottle |
| Immunohistochemistry Kit                    | DAB Kit  | G1212-200T<br>200T/bottle   |
|   | Immunohistochemistry Kit(HRP-conjugated Goat Anti-rabbit IgG(H+L)) | G1215-200T<br>200T/bottle   |
|   | Immunohistochemistry Kit(HRP-conjugated Goat Anti-mouse IgG(H+L))  | G1216-200T<br>200T/bottle   |
|   | HRP-conjugated Goat Anti-rabbit IgG(H+L)                           | G1213-100UL<br>100µL/bottle |
|   | HRP-conjugated Goat Anti-mouse IgG(H+L)                            | G1214-100UL<br>100µL/bottle |
| Immuno-Fluorescence Staining Kit            | TSAPLus Fluorescence Double Staining Kit                           | G1226-100T<br>100T/bottle   |
|   | TSAPLus Fluorescence Double Staining Kit                           | G1235-100T<br>100T/bottle   |
|   | TSAPLus Fluorescence Triple Staining Kit                           | G1236-100T<br>100T/bottle   |
| Mounting Media                              | Ultra-clean Fast Drying Mounting Media                             | G1404-100ML<br>100mL/bottle |
|   | SWE Environmental Friendly BioMount Media                          | G1405-100ML<br>100mL/bottle |
|   | Tissue Autofluorescence Quencher                                   | G1221-5ML<br>5mL/bottle     |
|   | Anti Fluorescence Quenching Mounting Media                         | G1401-5ML<br>5mL/bottle     |

# Lab Instruments

## Instruments

| Item   | Item No.  | Packing |
|--|-----------|---------|
| Mini Centrifuge                                  | MC-700    | set     |
| Magnetic Stirrer                                 | MS-150    | set     |
| Vortex Mixer                                     | MV-100    | set     |
| Shaker (Horizontal)                              | DS-2H200  | set     |
| Shaker (Pendulum)                                | DS-2S100  | set     |
| 3D Shaker  | DS-3D100  | set     |
| WB Electrophoresis Tank (Vertical)               | SVE-2     | set     |
| WB Electrophoresis Tank (Transfer)               | SVT-2     | set     |
| High-speed Room-temperature Homogenizer          | KZ-III    | set     |
| High-speed Low-temperature Homogenizer(-30°C)    | KZ-III-FP | set     |
| 3D High-speed Low-temperature Homogenizer(-40°C) | KZ-5F-3D  | set     |
| PCR Plate Sealer (Smart)                         | FS-A20    | set     |
| PCR Plate Sealer (Portable)                      | FS-E30    | set     |
| Dry Bath (Room Temperature + (5 °C -100°C))      | SMP-H     | set     |
| Dry Bath (0°C -100°C)                            | SMP-C     | set     |
| Dry Bath (0°C -100°C Programmable)               | SMP-PC    | set     |



115230, Москва, Россия, Каширское шоссе 3, корп. 2, стр. 4/9

Тел.: +7 (499) 682 6555, (495) 640 4192,

[biomol@chimmed.ru](mailto:biomol@chimmed.ru)

[www.chimmed.ru](http://www.chimmed.ru)